

SOLUCIONES PARA MONITORES ESCRITORIOS

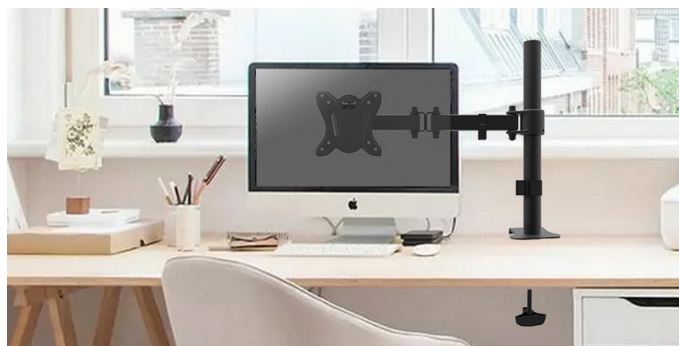
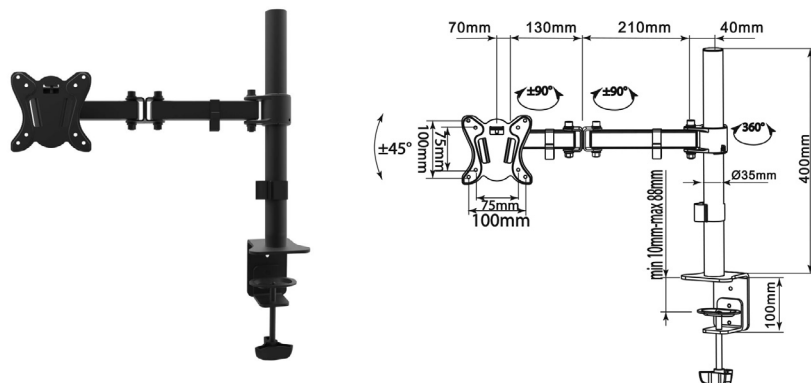


13"-32" ARTICULATING MONITOR DESK MOUNT BRACKET

Product N° - 650151

KEY FEATURES

- Max. Load Capacity: 8Kg
- Max. VESA: 100x100
- Installation: Grommet and Clamp
- Height adjustment
- Full motion mount
- Cable clips keep cables organized and protected
- VESA standards compliant



INSTALLATION VIDEO
SCAN HERE:

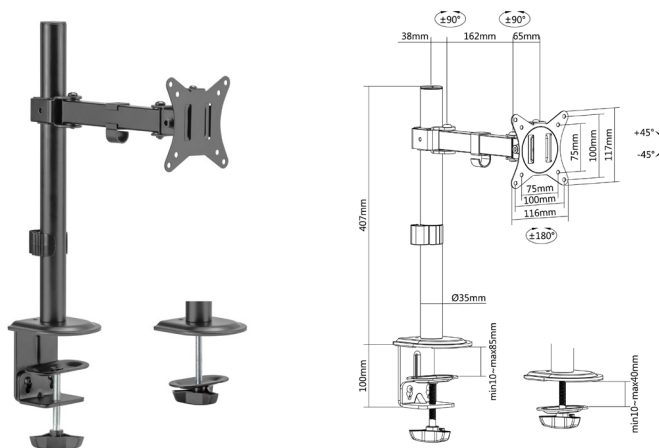


17"-32" ARTICULATING MONITOR DESK MOUNT BRACKET

Product N° - 650156

KEY FEATURES

- Max. Load Capacity: 9Kg
- Max. VESA: 100x100
- Mounting Option: Clamp (10-85mm) / Grommet (10-40mm)
- Screen Rotation: 360°
- Height adjustment
- Full motion mount
- Cable clips keep cables organized and protected
- VESA standards compliant
- Slide-in VESA plate provides easy access for attachment and detachment



INSTALLATION VIDEO
SCAN HERE:

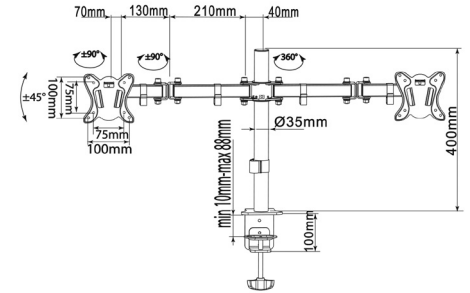
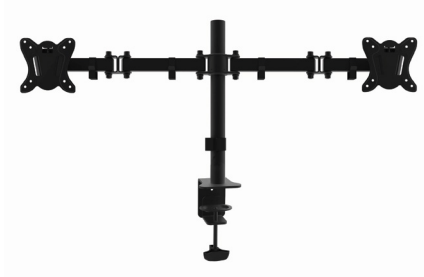


13"-27" ARTICULATING DUAL MONITOR DESK MOUNT BRACKET

Product N° - 650152

KEY FEATURES

- Max. Loading Capacity: 8Kg (per screen)
- Max. VESA: 100x100
- Installation: Grommet and Clamp
- Height adjustment
- Full motion mount
- Cable clips keep cables organized and protected
- VESA standards compliant
- Screen Rotation: 360°



INSTALLATION VIDEO
SCAN HERE:

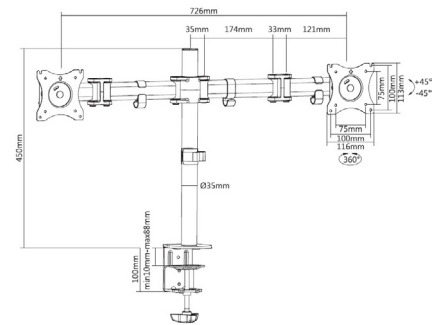


13"-27" ARTICULATING DUAL MONITOR DESK MOUNT BRACKET

Product N° - 650115

KEY FEATURES

- Max. Loading Capacity: 8Kg (per screen)
- Max. VESA: 100x100
- Installation: Grommet and Clamp
- Screen Rotation: 360°
- Mounting Option: Clamp/Grommet
- Full motion mount
- Cable clips keep cables organized and protected
- Height adjustment
- VESA standards compliant



INSTALLATION VIDEO
SCAN HERE:

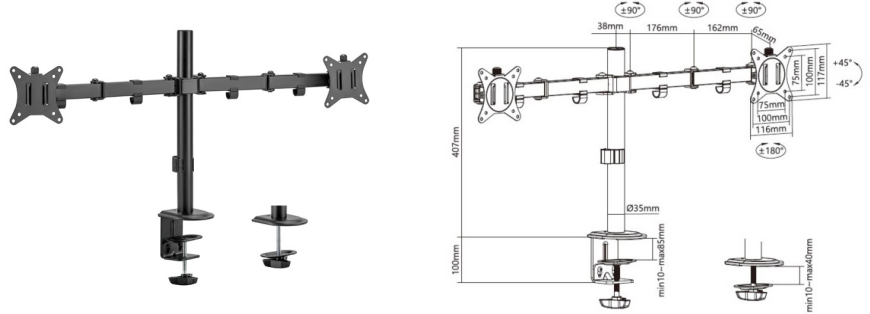


17"-32" ARTICULATING DUAL MONITOR DESK MOUNT BRACKET

Product N° - 650157

KEY FEATURES

- Max. Load Capacity: 9kg (per screen)
- Max. VESA: 100x100
- Installation: Grommet and Clamp
- Screen Rotation: 360°
- Mounting Option: Clamp/Grommet
- Full motion mount
- Cable clips keep cables organized and protected
- Height adjustment
- VESA standards compliant
- Free-tilting design for multiple monitor viewing angles
- Detachable VESA Plate Design
- Portrait or Landscape viewing : fits any installation



INSTALLATION VIDEO
SCAN HERE:



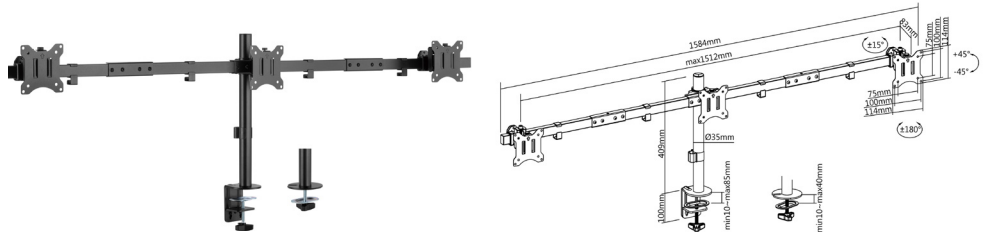
17"-32" ARTICULATING TRIPLE MONITOR DESK MOUNT BRACKET

Product N° - 650158

NEW

KEY FEATURES

- Max. Load Capacity: 7Kg (per screen)
- Max. VESA: 75x75, 100x100
- Sturdy Steel Construction
- Individual VESA Plate Height Adjustment.
- Portrait and Landscape Orientation
- Free-Tilting Design
- Cable clips keep cables organized and protected
- Detachable VESA Plate Design: enables easy installation



INSTALLATION VIDEO
SCAN HERE:

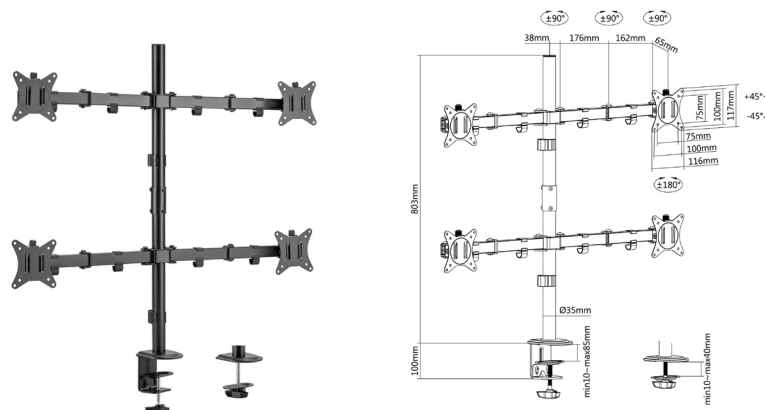


17"-32" ARTICULATING QUAD MONITOR DESK MOUNT BRACKET

Product N° - 650159

KEY FEATURES

- Max. Load Capacity: 9Kg (per screen)
- Max. VESA: 100x100
- Screen Rotation: 360°
- Mounting Option: Clamp (10-85mm) /Grommet (10-40mm)
- Swivel and Tilt Desk Mount
- VESA standards compliant
- Cable clips keep cables organized and protected
- Both grommet and desk clamp mounting available
- Freely adjusting height for an optimal ergonomic position
- Slide-in VESA plate provides easy access for attachment and detachment



INSTALLATION VIDEO
SCAN HERE:

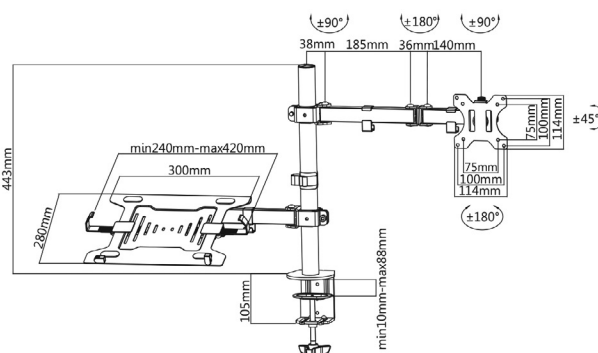


13"-32" ARTICULATING DUAL ARM MONITOR LAPTOP DESK MOUNT BRACKET

Product N° - 650119

KEY FEATURES

- Max. Load Capacity: 8Kg
- Max. VESA: 100x100
- Screen Rotation: 360°
- Mounting Option: Clamp/Grommet
- VESA standards compliant
- Built-in Cable management
- Both grommet and desk clamp mounting available



INSTALLATION VIDEO
SCAN HERE:



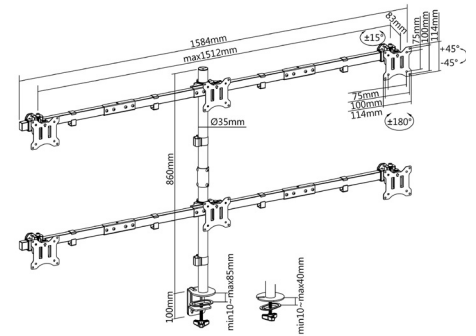
17"-32" ARTICULATING 6 MONITOR DESK MOUNT BRACKET

Product N° - 650160

NEW

KEY FEATURES

- Max. Load Capacity: 7Kg (per screen)
- Max. VESA: 75x75, 100x100
- Sturdy Steel Construction
- Individual VESA Plate Height Adjustment
- Portrait and Landscape Orientation
- Free-Tilting Design
- Cable clips keep cables organized and protected
- Detachable VESA Plate Design: enables easy installation



INSTALLATION VIDEO
SCAN HERE:

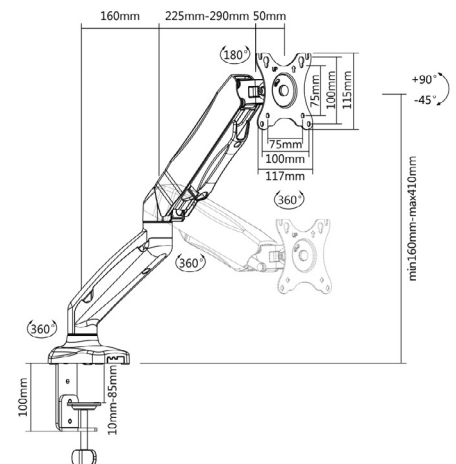


17"-32" INTERACTIVE MONITOR DESK MOUNT BRACKET

Product N° - 650120

KEY FEATURES

- Max. Load Capacity: 9Kg
- Max. VESA: 100x100
- Screen Rotation: 360°
- Mounting Option: Clamp/Grommet
- Gas spring structure offers perfect counterbalance presentation in all directions
- Built-in Cable management
- Both grommet and desk clamp mounting available
- VESA standards compliant



INSTALLATION VIDEO
SCAN HERE:

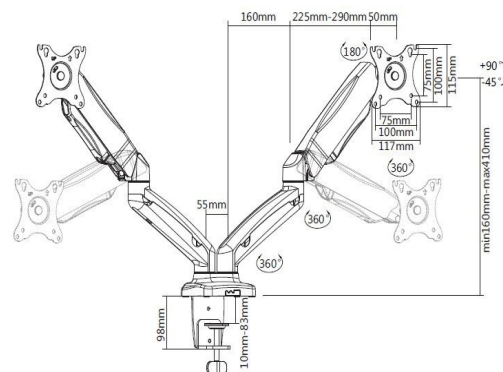


17"-32" INTERACTIVE DUAL MONITOR DESK MOUNT BRACKET

Product N° - 650121

KEY FEATURES

- Max. Load Capacity: 9Kg (per screen)
- Max. VESA: 100x100
- Screen Rotation: 360°
- Mounting Option: Clamp/Grommet
- Gas spring structure offers perfect counterbalance presentation in all directions
- Built-in Cable management
- Both grommet and desk clamp mounting available
- VESA standards compliant



INSTALLATION VIDEO
SCAN HERE:

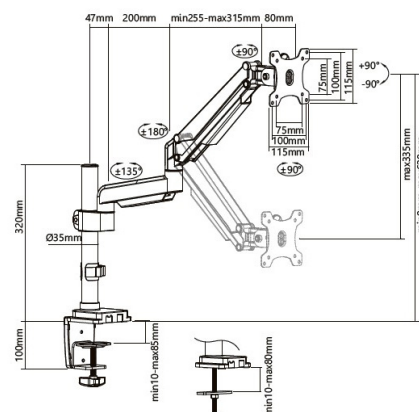


13"-27" ARTICULATING MONITOR DESK MOUNT BRACKET

Product N° - 650112

KEY FEATURES

- Max. Load Capacity: 9Kg
- Max. VESA: 100x100
- Mounting Option: Clamp/Grommet
- Screen Rotation: 360°
- Sturdy and lightweight aluminum construction
- Gas spring structure offers perfect counterbalance presentation in all directions
- VESA standards compliant
- Tool-free height adjustment
- Integrated cable management system
- Built-in spring tension gauge can be easily adjusted to fit varied weights on the arm



INSTALLATION VIDEO
SCAN HERE:

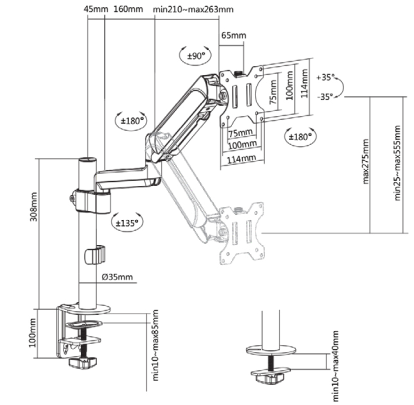


13"-32" MONITOR DESK MOUNT BRACKET

Product N° - 650132

KEY FEATURES

- Max. Load Capacity: 9Kg
- Max. VESA: 100x100
- Mounting Option: Clamp/Grommet
- Screen Rotation: 360°
- Sturdy and lightweight aluminum construction
- Gas spring structure offers perfect counterbalance presentation in all directions
- Built-in spring tension gauge can be easily adjusted to fit varied weights on the arm
- VESA standards compliant
- Tool-free height adjustment
- Integrated cable management system



INSTALLATION VIDEO
SCAN HERE:

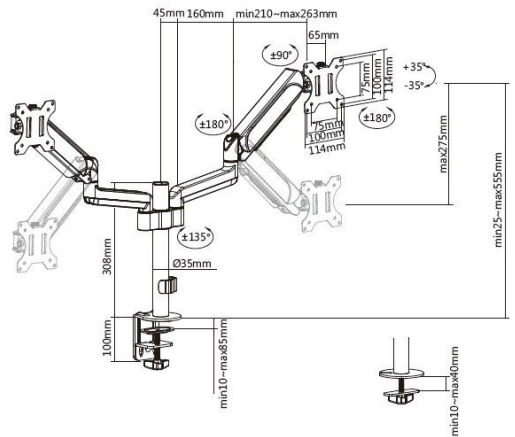


17"-32" DUAL MONITOR DESK MOUNT BRACKET

Product N° - 650133

KEY FEATURES

- Max. Load Capacity: 9Kg (per screen)
- Max. VESA: 100x100
- Mounting Option: Clamp/Grommet
- Screen Rotation: 360°
- Sturdy and lightweight aluminum construction
- Gas spring structure offers perfect counterbalance presentation in all directions
- Built-in spring tension gauge can be easily adjusted to fit varied weights on the arm
- VESA standards compliant
- Tool-free height adjustment
- Integrated cable management system



INSTALLATION VIDEO
SCAN HERE:

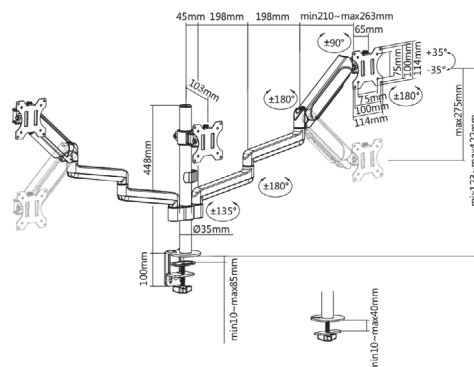


17"-27" TRIPLE MONITOR DESK MOUNT BRACKET

Product N° - 650134

KEY FEATURES

- Max. Load Capacity: 7Kg (per screen)
- Max. VESA: 100x100
- Mounting Option: Clamp/Grommet
- Screen Rotation: 360°
- Sturdy and lightweight aluminum construction
- Gas spring structure offers perfect counterbalance presentation in all directions
- Built-in spring tension gauge can be easily adjusted to fit varied weights on the arm
- VESA standards compliant
- Tool-free height adjustment
- Integrated cable management system



INSTALLATION VIDEO
SCAN HERE:

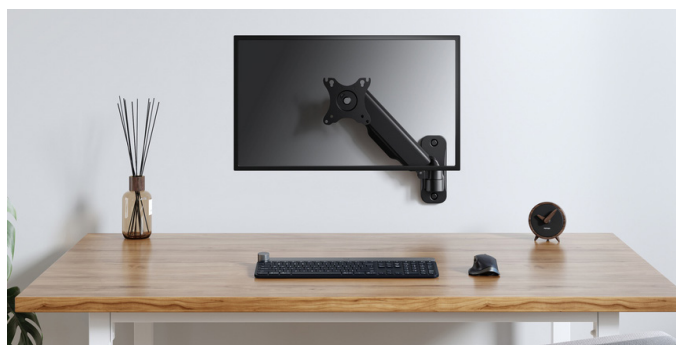
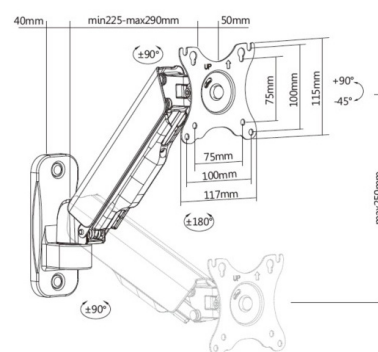


17"-32" SINGLE MONITOR WALL-MOUNTED BRACKET, ARM LENGTH:290MM

Product N° - 650136

KEY FEATURES

- Max. Load Capacity: 9Kg
- Max. VESA: 100x100
- Screen Rotation: 360°
- Gas spring structure offers perfect counterbalance presentation in all directions
- Built-in spring tension gauge can be easily adjusted to fit varied weights on the arm
- VESA standards compliant
- Free-tilting design for multiple monitor viewing angles
- Slide-in wall plate provides easy access for attachment and detachment
- Cable clips keep cables organized and protected



INSTALLATION VIDEO
SCAN HERE:

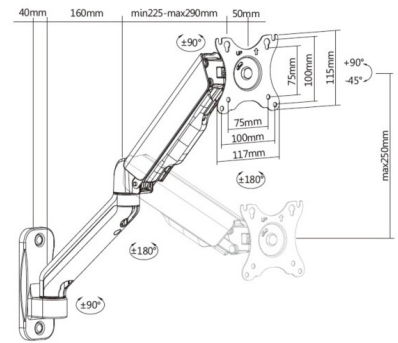


17"-32" SINGLE MONITOR WALL-MOUNTED BRACKET, ARM LENGTH:450MM

Product N° -650137

KEY FEATURES

- Max. Load Capacity: 9Kg
- Max. VESA: 100x100
- Screen Rotation: 360°
- Gas spring structure offers perfect counterbalance presentation in all directions
- Built-in spring tension gauge can be easily adjusted to fit varied weights on the arm
- VESA standards compliant
- Free-tilting design for multiple monitor viewing angles
- Slide-in wall plate provides easy access for attachment and detachment
- Cable clips keep cables organized and protected



INSTALLATION VIDEO
SCAN HERE:

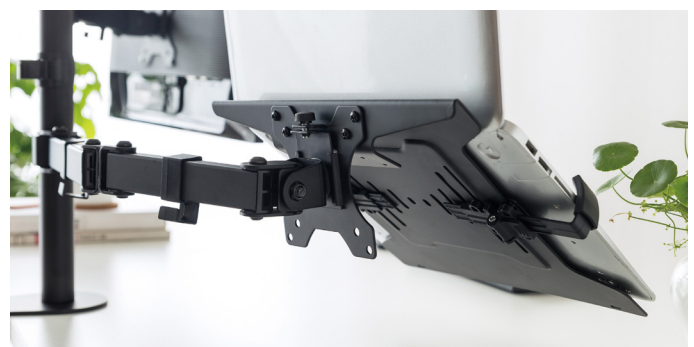
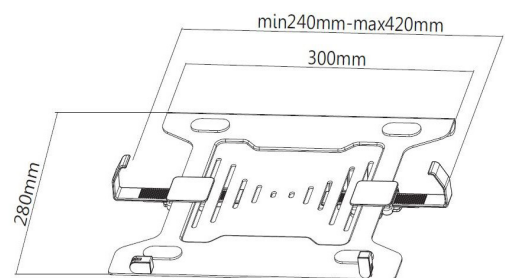
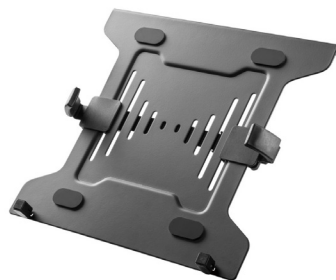


LAPTOP HOLDER FOR 10"-15.6"

Product N° - 650155

KEY FEATURES

- Mountable on VESA standards compliant 75x75 & 100x100
- Ventilated Design
- Width Adjustment
- Steel Construction with strength and durability



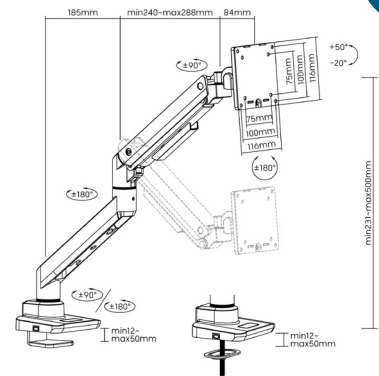
17"-49" HEAVY-DUTY MONITOR DESK MOUNT BRACKET, BLACK

Product N° -650180

NEW

KEY FEATURES

- Max. Load Capacity: 20Kg
- Max. VESA: 75x75, 100x100
- Gas Spring-Assisted Monitor Arm
- Optimized Tilting Structure
- Installs from Top Side: installs entirely from above the desk surface
- Cable clips keep cables organized and protected
- Detachable VESA Plate Design: enables easy installation



INSTALLATION VIDEO
SCAN HERE:



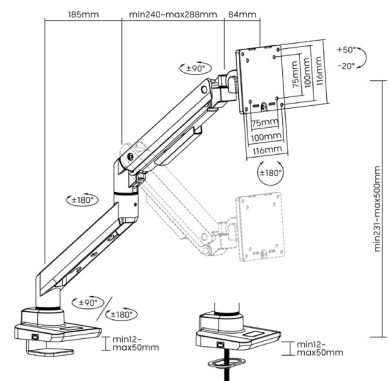
17"-49" HEAVY-DUTY MONITOR DESK MOUNT BRACKET, WHITE

Product N° - 650181

NEW

KEY FEATURES

- Max. Load Capacity: 20Kg
- Max. VESA: 75x75, 100x100
- Gas Spring-Assisted Monitor Arm
- Optimized Tilting Structure
- Installs from Top Side: installs entirely from above the desk surface
- Cable clips keep cables organized and protected
- Detachable VESA Plate Design: enables easy installation



INSTALLATION VIDEO
SCAN HERE:



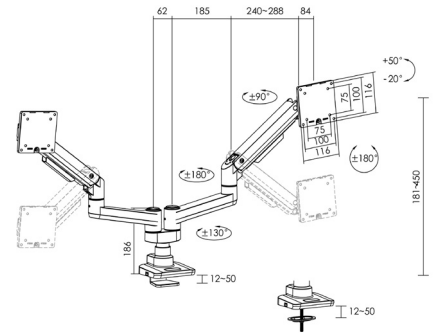
17"-35" HEAVY-DUTY DUAL MONITOR DESK MOUNT BRACKET, BLACK

Product N° -650182

NEW

KEY FEATURES

- Max. Load Capacity: 20Kg (per screen)
- Max. VESA: 75x75, 100x100
- Gas Spring-Assisted Monitor Arm
- Optimized Tilting Structure
- Installs from Top Side: installs entirely from above the desk surface
- Cable clips keep cables organized and protected
- Detachable VESA Plate Design: enables easy installation



INSTALLATION VIDEO
SCAN HERE:



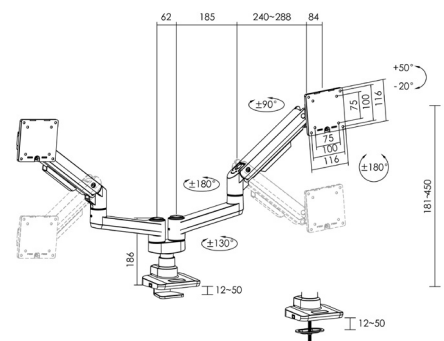
17"-35" HEAVY-DUTY DUAL MONITOR DESK MOUNT BRACKET, WHITE

Product N° - 650183

NEW

KEY FEATURES

- Max. Load Capacity: 20Kg (per screen)
- Max. VESA: 75x75, 100x100
- Gas Spring-Assisted Monitor Arm
- Optimized Tilting Structure
- Installs from Top Side: installs entirely from above the desk surface
- Cable clips keep cables organized and protected
- Detachable VESA Plate Design: enables easy installation



INSTALLATION VIDEO
SCAN HERE:



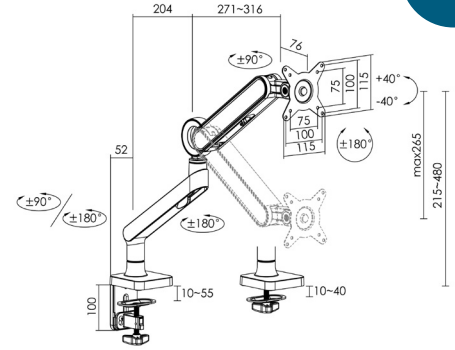
17"-35" PREMIUM MONITOR DESK MOUNT BRACKET, BLACK

Product N° -650184

NEW

KEY FEATURES

- Max. Load Capacity: 10.5Kg
- Max. VESA: 75x75, 100x100
- Gas Spring-Assisted Monitor Arm
- Easy to adjust, no tools required
- 180° Rotation Stop
- Built-in Spring Tension Mechanism: for perfect weight adjustments
- Cable clips keep cables organized and protected
- Detachable VESA Plate Design: enables easy installation



INSTALLATION VIDEO
SCAN HERE:



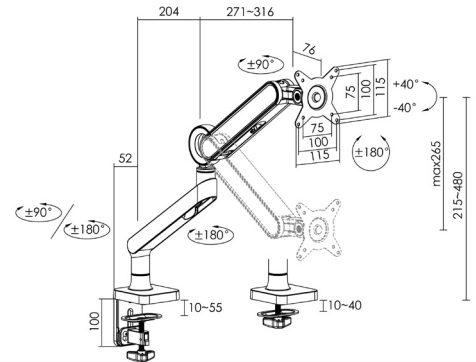
17"-35" PREMIUM MONITOR DESK MOUNT BRACKET, WHITE

Product N° - 650185

NEW

KEY FEATURES

- Max. Load Capacity: 10.5Kg
- Max. VESA: 75x75, 100x100
- Gas Spring-Assisted Monitor Arm
- Easy to adjust, no tools required
- 180° Rotation Stop
- Built-in Spring Tension Mechanism: for perfect weight adjustments
- Cable clips keep cables organized and protected
- Detachable VESA Plate Design: enables easy installation



INSTALLATION VIDEO
SCAN HERE:





www.equip-info.net



Technical specifications are subject to change without notice.
© Copyright Digital Data Communications GmbH. All Rights Reserved.
Im Defdahl 10F, 44141 Dortmund, Germany

DISTRIBUTED BY

2024 EN